

LXi6/LXi7

UV-LED PRINTER



JETRIX
SIMPLE & PERFECT

JETRIX ULTRA HIGH SPEED UV LED PRINTER - LXi6/LXi7

Enjoy amazing output speeds and greatly reduced operating costs with the LXi6/LXi7 printers

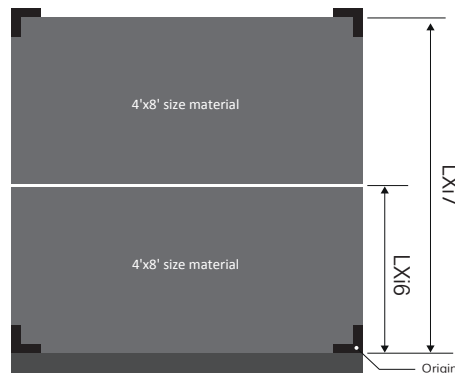
InkTec's JETRIX LXi6/LXi7 printers have 2.5m x 1.3m and 2.5m x 3.0m wide flatbeds respectively combined with a powerful zonal vacuum system with automated pin registration for quick and accurate media placement.

With the top printing speeds reaching up to 76sqm/h(LXi6), 78sqm/h(LXi7), these printers offer significantly faster speeds than previous models. The innovative LED curing system, reduces operational costs by delivering an overall lower energy consumption and delivers a longer lamp lifetime. Designed and developed with the user in mind, the LXi6/LXi7 features many automated functions and safety systems for increased productivity. The LXi6/LXi7 delivers new printing possibilities combined with optimal printing results.

OUTSTANDING EXTERIOR FEATURES

Market oriented 4'x8' size based flatbed system

- The LXi6 can print one sheet of 4'x8' material and the LXi7 can print two sheets of 4'x8' material at a time.



Sophisticated flatbed and vacuum system

- Robust and stable flatbed, designed to meet extensive and high quality requirements
- Automatic control of the six different vacuum zones ensure substrates are held completely flat when printing

Super fast Konica Minolta printheads

- Printing speeds are more than twice as fast as previous models
- Photorealistic printing achieved through high resolution and variable dot

Efficient LED curing system

- Extended LED lamp life time of up to 20,000 hours (compared to mercury lamps)
- Eco friendly printing with reduced energy consumption
- Risks associated with the impact of heat are eliminated, such as media deformation

Convenient automatic functions

- Automatic nozzle cleaning system
- Automated pin registration for fast and accurate media placement
- Touch screen monitor

Safety functions

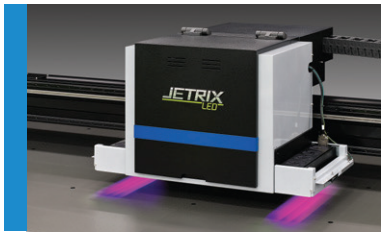
- Laser guided safety sensor to avoid an accident (head carriage moves slowly when some objects are detected)
- Automatic anti-head crash system, to protect head damage

Advanced and user friendly GUI software

- Designed to achieve a higher quality print, with faster speeds
- Newly developed user friendly functions such as 'Drag & Print' (Patent Pending)

Effective anti-static system (Optional)

- Powerful ionizing system to eliminate static from a wide range of materials



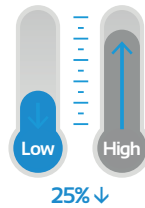
JETRIX
UV LED PRINTER
LXi6 / LXi7

HIGHLY EFFICIENT LED CURING SYSTEM

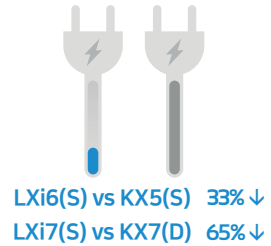
5 reasons why
LED curing system
is competitive!

- LED Lamp
- Conventional UV Lamp

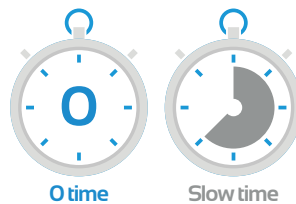
Less heat



Lower electricity consumption



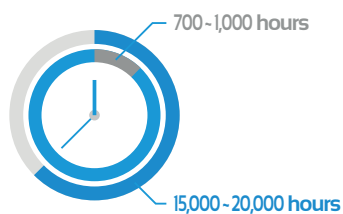
No warm-up time

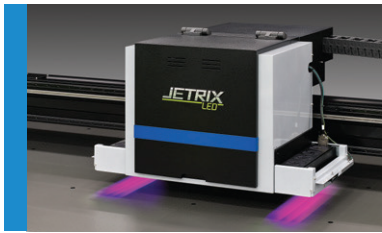


Environmentally friendly



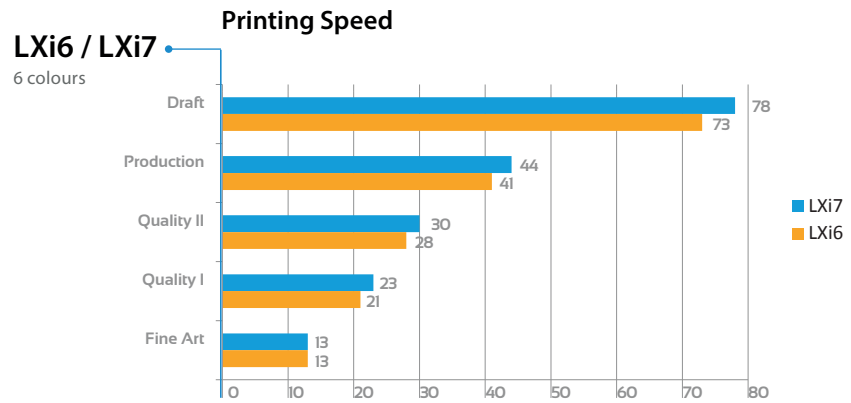
Lamp life time



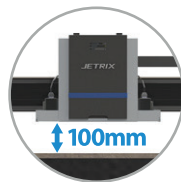


JETRIX UV LED PRINTER LXi6 / LXi7

COMPETITIVE PRINTING SPEED



OPTIMAL PRINTING STRUCTURE FOR VARIOUS APPLICATION

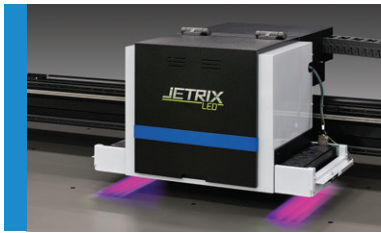


Maximum substrate
thickness 100mm



Maximum loadable
weight 80kg/sqm





JETRIX UV LED PRINTER LXi6 / LXi7

POWERED BY DEDICATED JETRIX GUI SOFTWARE

JETRIX GUI (Graphical User Interface) simplifies, optimises and automates as many steps as possible.

InkTec have developed a new JETRIX GUI (Graphical User Interface) to meet customers' increased expectations.

InkTec's innovative software is designed to achieve a higher quality print with convenience functions.

Combined JETRIX printer, JETRIX GUI will maximise your printing performance.

Easy Image Editing

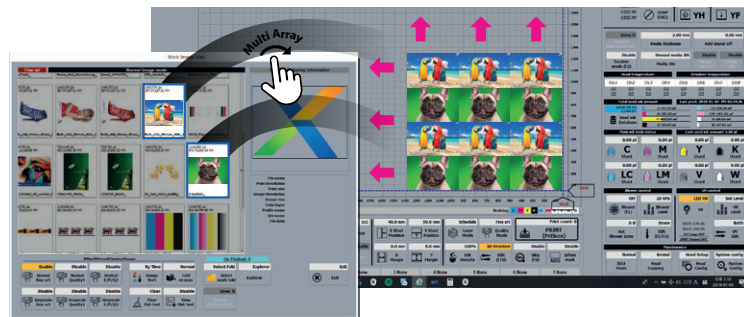
1. Drag & Print

- Just drag an image from the work folder to the visualised flatbed on the monitor.
- The x, y coordinates are displayed in the visualised flatbed, so that users can array multiple images on the monitor easily.



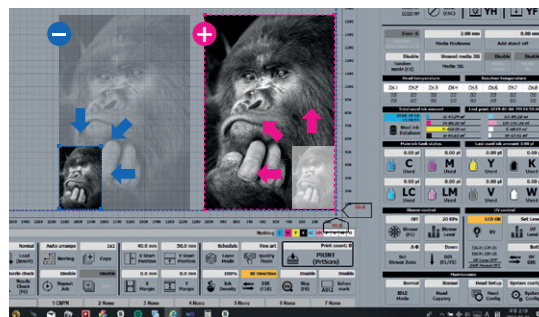
2. Multi Array & Copying

- After ripping an image, users can print multiple images without requiring any additional ripping.
- Moving and nesting images is easy through the Drag & Print function.



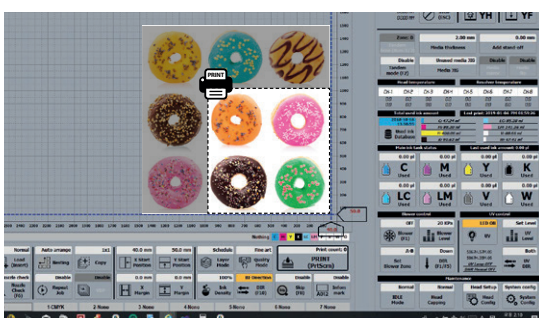
3. Re-sizing Images

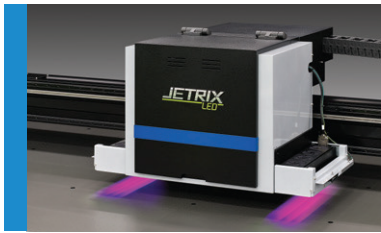
- Some resolutions are reduced, but you can also easily shrink and enlarge images as required, without ripping the original.



4. Image Crop

- If required, only a part of the image can be easily extracted and printed
- The printing speed can be further enhance by using the Image Crop function.



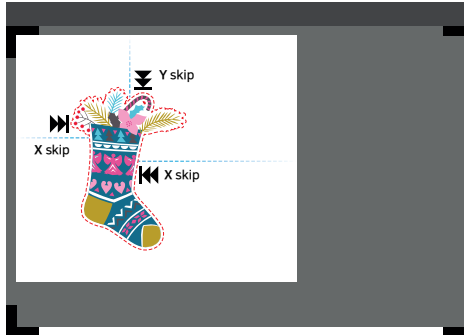


JETRIX UV LED PRINTER LXi6 / LXi7

Easy and convenient applications

1. X-Y Skip printing

- Depending on the shape of the image, the head carriage skips blank margins fast to improve productivity.



2. JIG Function

- The JIG function is designed to enable mass repetition, where convenient and accurate double-sided printing is achievable



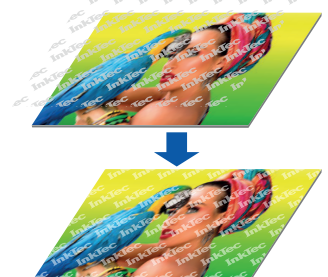
3. VDP (Variable Data Printing)

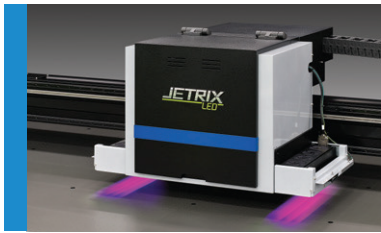
- Variable data printing is particularly relevant when different text output is required for common images such as for name badges and certificates.



4. Image Overlapping (Watermark)

- Different images can be overlapped and a watermark function can also be implemented.

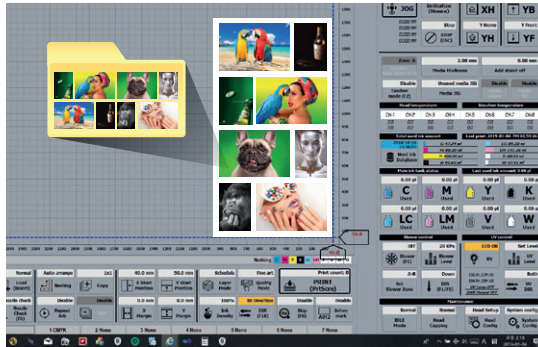




JETRIX UV LED PRINTER LXi6 / LXi7

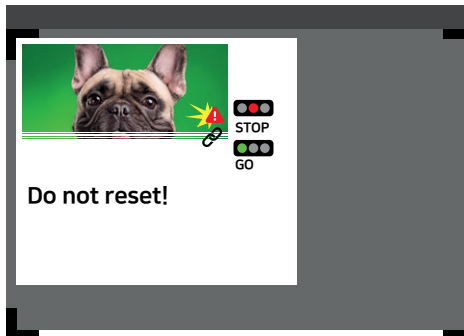
5. Thumbnail Printing

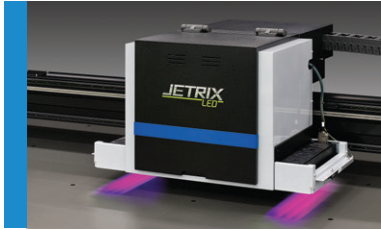
- Sample images, such as thumbnails can be output without ripping.



2. Stop & Go function

- Even if the printing stops due to a problem during printing, the printing will be resumed with the 'Stop & Go' function. Of course, it can be restarted even after arbitrary printing stops.
- This function prevents loss of material or time due to re-printing.





JETRIX
UV LED PRINTER
LXi6 / LXi7

Easy Quality Control

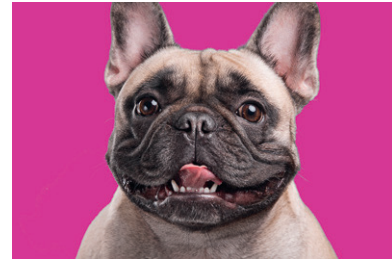
1. Nozzle Replacement

- On the odd occasion when print problems may occur due to clogged nozzles and the automatic nozzle cleaning does not resolve the issue, the nozzle replacement function is able to replace the problem nozzle with another nozzle to enable normal output.

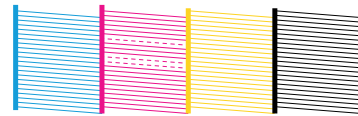
* Recoverability of Nozzle Recovery Function is limited.



Nozzle clogged



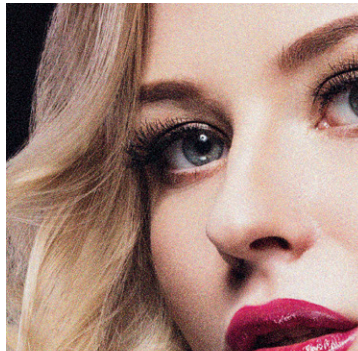
Replace



2. Variable Dot Printing

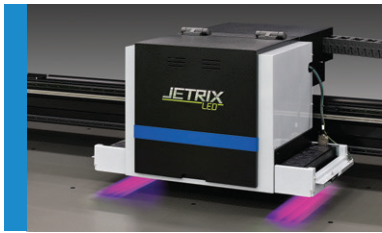
Variable drop function provides different drop sizes at once to produce smooth and natural graduation, without a granular appearance.

Normal



Variable Dot





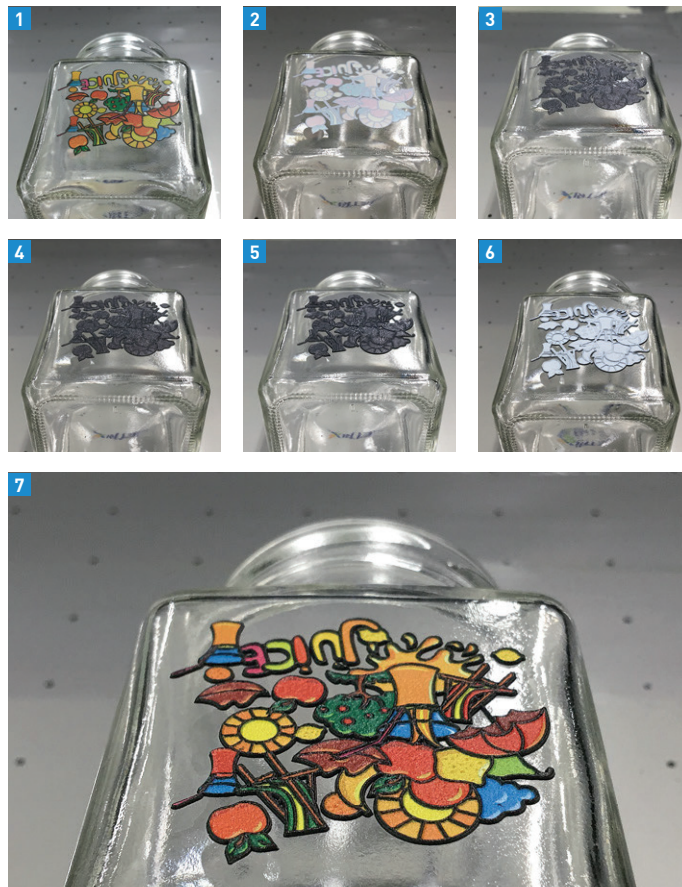
JETRIX
UV LED PRINTER
LXi6 / LXi7

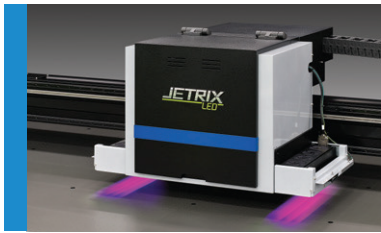
Special application

3D EFFECT PRINTING FUNCTION

3D effect and texture printing

- 3D effect and texture printing are available by using multi layer printing





JETRIX UV LED PRINTER LXi6 / LXi7

JETRIX UV LED inks

World class InkTec-made inks

InkTec UV inks have many benefits for outdoor & indoor printing due to their superior UV resistance, high colour concentration and excellent adhesion. Their fast drying time, wide colour gamut and high density delivers enhanced printing productivity. Furthermore, these inks are suitable for wide range of both coated and uncoated roll media, such as Flex, PVC and Vinyl and ridged substrates such as ACM, Correx, Acrylic, Glass and Foam PVC.

High quality output

The JETRIX UV inkjet inks are stable, fast curing and easy to handle. These digital inks print in sharp, vibrant colours on a wide range of flexible and rigid, coated and uncoated media. Generating high image quality, they offer an ideal solution for various indoor and outdoor applications.

Outdoor durability

The JETRIX UV inks have been formulated using only the highest quality of automotive grade pigments. The result is a high quality print with superior lightfastness for most graphical arts applications, also delivering long-term outdoor benefits. Accelerated weathering tests on different substrates indicate the outdoor durability is more than 2years under normal outdoor conditions.

Versatile functional inks and white

Varnish can be used to add impact and value, with a spot or flood varnish giving a uniform finish
Primer can be used to print on difficult substrates, such as glass and metal
White ink can be used to produce images on transparent or coloured materials

Colour configuration and features

6 channel		8 channel
Configuration	C,M,Y,K,LC,LM	C,M,Y,K,LC,LM, W,W
		C,M,Y,K,LC,LM, W, Vanish or Primer

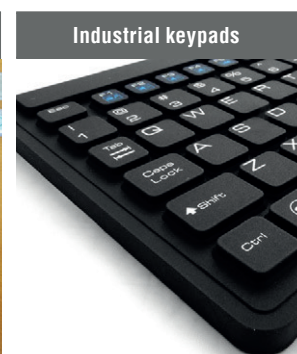
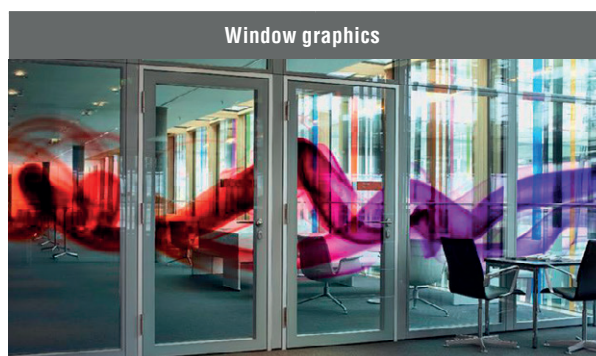
model name	ULA	ULB
Feature	Standard type	Hard type
	Hard to crack	Excellent scratch resistance
	Excellent media compatibility	Superior colour gamut and vivid colour



SPECIFICATION

LXi6		LXi7
Head	Konica KM1024i	
Resolution	1080x720	
Rigid media size	2,500mm x 3,060mm	2,500mm x 1,280mm
Rigid media thickness	100mm	
Printing speed	Fine Art	23sqm/h
	Quality	30sqm/h
	Production	44sqm/h
	Draft	78sqm/h
White	Available	
Varnish, Primer	Available	
RIP recommendation	Caldera	
Dimension (W x D x H)	4,220 X 4,030 X 1,440(mm)	4,220 X 2,200 X 1,440(mm)
Weight	3,000kg	1,400kg / 1,800kg (Roll)
Electrical requirement	380VAC, 3-phase (4Wire) 50~60Hz, 11.8kVA	380VAC, 3-phase (4Wire) 50~60Hz, 9.9kVA
Compressed Air requirement	over 0.5MPa	

APPLICATIONS



About InkTec R&D

As a world class printing solution provider, InkTec designs new technologies and innovates through steady investment in R&D in order to leap forward and constantly be seen as a key company specialising in digital printing.

InkTec are always striving to do their best to achieve global technical leadership, always focusing on the future of printing.



InkTec Co., Ltd. 98-12, Neungan-ro, Danwon-gu, Ansan-si, Gyeonggi-do, 15426, Korea
TEL +82 31 494 0001 E-mail expt@inktec.com www.inktec.com www.facebook.com/InkTec.DigitalPrinting

InkTec EUROPE Bulford House, Supergas Industrial Estate, Downs Road, Witney, OXON OX29 0SZ, United Kingdom
TEL +44(0)-1993-862-770 FAX+44(0)-1993-862-771 E-mail info@inkteceu.com